



Veranstalter: Bayerischer Schachbund e.V.

26. Offene Bayerische Senioren-Einzel-Meisterschaft

Vom 21. bis 29. Juni 2014 in Bergen (Chiemgau).

„Herbert-Ganslmayer-Gedächtnisturnier“

Runde 2 - 22. Juni 2014:

Immer noch sind die Paarungen von zum Teil großen DWZ-Unterschieden geprägt, sodass auch die Teilerfolge der Außenseiter gegen die Favoriten Erwähnung finden sollen: Günter Leuschner, Hans-Peter Abel, Vyacheslav Babichev, Anton Königl, Klaus Reichwald, Hubert Stephan, Josef Sandner sowie Gerald Rudek gelang dieses „Kunststück“ in dieser Runde. Bereits zum zweiten Male in Folge blieben die beiden „Underdogs“ Heinz Hütter (DWZ 1438) und Ehrhard Peiberg (DWZ 1483) nun schon gegen scheinbar übermächtige Gegnerschaft ohne Niederlage. Noch ein wenig nachhaltiger machte allerdings Dr. Herbert Neumeister (DWZ 1716) durch seinen sehr verdient herausgespielten Sieg über Josef Glueck (DWZ 1899) auf sich aufmerksam! - Und damit kommen wir zu unseren teilnehmenden Damen, die in dieser Runde besonders erfolgreich abschnitten. Jeweils mit zum Teil überdeutlich weniger DWZ angetreten, erzielte Brigitte Jurgan (DWZ 1225) ein verdientes Unentschieden gegen Fernand Weyand (DWZ 1587), wurde dabei jedoch noch von Marianne Hartlaub (DWZ 1348) mit ihrem Sieg über Oskar Husser (DWZ 1620), und Ilse Garms (DWZ 1532), die in der letzten Partie dieser Runde Peter Niedermeier (DWZ 1684) bezwang, übertroffen.

Runde 2 - Paarungsliste:

T.:	Nr.:	Teilnehmer	Tit	DWZ	Pkt.:	-	Nr.:	Teilnehmer	Tit.:	DWZ	Pkt.:	Erg.:
1	1.	Röder, Frank	FM	2184	(1)	-	28.	Willin, Bernhard		1807	(1)	1 - 0
2	29.	Klein, Reinhard		1803	(1)	-	2.	Schmidt, Gerhard		2152	(1)	0 - 1
3	3.	Koller, Hubert		2089	(1)	-	31.	Aigner, Georg		1786	(1)	1 - 0
4	33.	Klüber, Werner		1769	(1)	-	4.	Urytskyy, Arkadiy		2084	(1)	0 - 1
5	5.	Miskevicer, Boris		2079	(1)	-	35.	Hansch, Klaus-Mic		1766	(1)	1 - 0
6	37.	Leuschner, Günter		1755	(1)	-	6.	Däubler, Heinrich		2044	(1)	½ - ½
7	7.	Goy, Udo		2032	(1)	-	36.	Bräu, Ludwig		1759	(1)	1 - 0
8	39.	Kaufmann, Helmut		1742	(1)	-	8.	Röder, Gerd, Dr.	FM	2016	(1)	0 - 1
9	9.	Straub, Peter		2009	(1)	-	40.	Wolf, Reinhard		1731	(1)	1 - 0
10	11.	Selig, Rainer		1966	(1)	-	41.	Worschech, Roland		1730	(1)	1 - 0
11	13.	Stolpynskyy, Mark		1943	(1)	-	44.	Zehfuß, Helmut		1710	(1)	1 - 0
12	43.	Abel, Hans-Peter		1715	(1)	-	14.	Gerl, Hans, Dr.		1917	(1)	½ - ½
13	45.	Reichwald, Klaus		1707	(1)	-	16.	Kochseder, Georg		1892	(1)	½ - ½
14	17.	Neubauer, Jarosla		1889	(1)	-	46.	Boldt, Heinrich		1701	(1)	1 - 0
15	19.	Šimin, Vladimir		1883	(1)	-	48.	Schönfelder, Hein		1692	(1)	1 - 0
16	21.	Rückleben, Herman		1876	(1)	-	72.	Janzen, Christian		1579	(1)	1 - 0
17	49.	Babichev, Vyaches		1689	(1)	-	22.	Dürr, Rainer, Dr.		1861	(1)	½ - ½
18	25.	Krafzik, Joachim		1819	(1)	-	76.	Alefs, Willi		1533	(1)	1 - 0
19	61.	Schindler, Jan		1637	(1)	-	26.	Knollmüller, Pete		1815	(1)	0 - 1
20	67.	Schuster, Herbert		1615	(½)	-	10.	Fischer, Gerd		2008	(½)	0 - 1
21	15.	Glueck, Josef		1899	(½)	-	42.	Neumeister, Herbe		1716	(½)	0 - 1
22	73.	Malik, Heinz		1568	(½)	-	18.	Walther, Reinhard		1885	(½)	0 - 1
23	79.	Siegl, Wolfgang, D		1522	(½)	-	24.	Pidtoptanyy, Igor		1821	(½)	0 - 1
24	83.	Otto, Klaus		1499	(½)	-	30.	Zschorsch, Peter		1788	(½)	0 - 1
25	85.	Peiberg, Ehrhard		1483	(½)	-	32.	Kolkwitz, Klaus		1784	(½)	½ - ½
26	89.	Hütter, Heinz		1438	(½)	-	34.	Reimann, Günther		1768	(½)	½ - ½
27	93.	Ewald, Frithjof		1355	(½)	-	38.	Perzl, Michael		1754	(½)	0 - 1
28	59.	Appel, Jürgen		1650	(½)	-	64.	Oser, Thor		1622	(½)	1 - 0
29	74.	Flockerzi, Armin		1565	(0)	-	12.	Hein, Manfred		1943	(0)	0 - 1
30	27.	Klein, Klaus		1809	(0)	-	78.	Moderegger, Ludwi		1528	(0)	1 - 0
31	75.	Stephan, Hubert		1540	(0)	-	50.	Hermann, Josef		1687	(0)	1 - 0
32	77.	Garms, Ilse		1532	(0)	-	52.	Niedermaier, Pete		1684	(0)	1 - 0
33	53.	Walch, Roger		1681	(0)	-	80.	Steffl, Herbert		1512	(0)	1 - 0
34	81.	Rosmann, Armin		1505	(0)	-	54.	Schröder, Klaus		1680	(0)	0 - 1
35	55.	Stadler, Lothar		1674	(0)	-	84.	Kunert, Helmut		1491	(0)	1 - 0
36	86.	Sandner, Josef		1461	(0)	-	56.	Klimpel, Siegfrie		1662	(0)	1 - 0

37	57.	Lüders,Günter,Dr		1659	(0)	-	88.	Nieswandt,Joseph		1443	(0)	1 - 0
38	87.	Jehn,Detlef		1449	(0)	-	58.	Mehlhorn,Dieter		1656	(0)	0 - 1
39	90.	Wilfert,Eva-Mari		1414	(0)	-	60.	Wolfram,Gisbert,		1637	(0)	0 - 1
40	91.	Rudek,Gerald		1394	(0)	-	62.	Alefs,Heinz		1627	(0)	½ - ½
41	47.	Königl,Anton		1696	(1)	-	20.	Jaghuber,Hans		1876	(1)	½ - ½
42	63.	Mahrla,Hans,Dr.		1626	(0)	-	92.	Borkenhagen,Bern		1391	(0)	1 - 0
43	65.	Husser,Oskar		1620	(0)	-	94.	Hartlaub,Mariann		1348	(0)	0 - 1
44	95.	Neiss,Albrecht		1342	(0)	-	66.	Baumgartner,Andr		1618	(0)	0 - 1
45	97.	Bräu,Emmi		1331	(0)	-	68.	Kammel,Rudolf		1613	(0)	0 - 1
46	69.	Kunte,Herbert		1603	(0)	-	96.	Steckel,Werner		1338	(0)	1 - 0
47	99.	Jurgan,Brigitte		1225	(0)	-	70.	Weyand,Fernand		1587	(0)	½ - ½
48	71.	Scheuerlein,Gerh		1585	(0)	-	98.	Malik,Rosemarie		1327	(0)	1 - 0
49	100	Walther,Renate		818	(0)	-	101	spielfrei			(0)	+ - -

Runde 2 - Partien:

1

Roeder, Frank 2184

Willin, Bernhard 1807

1.e4 e6 2.d4 c5 3.d5 e5 4.Sc3 d6 5.f4 Sd7 6.Sf3 a6 7.a4 De7 8.Ld3 g6 9.fxe5 Sxe5 10.Sxe5 Dxe5 11.0-0 Lh6 12.Df3 De7 13.e5 dxe5 14.d6 Df8 15.Sd5 Tb8 16.Lxh6 Sxh6 17.Sf6+ Kd8 18.Dd5 Sf5 19.d7 **1-0**

2

Klein, Reinhard 1803

Schmidt, Gerhard 2152

1.d4 Sf6 2.Lf4 e6 3.e3 d5 4.Sf3 Le7 5.c4 c5 6.Sc3 0-0 7.dxc5 Lxc5 8.cxd5 Sxd5 9.Sxd5 exd5 10.Ld3 Lb4+ 11.Kf1 Sc6 12.Tc1 Lg4 13.Dc2 h6 14.h3 Le6 15.Da4 Ld6 16.g4 Sb4 17.Lb1 Lxf4 18.exf4 Dd6 19.Se5 f6 20.Sg6 Tfd8 21.a3 Sc6 22.Dc2 d4 23.Dd3 Tac8 24.Kg2 Te8 25.The1 Ld5+ 26.Kg1 Lf7 27.Sh4 Txe1+ 28.Txe1 Te8 29.Txe8+ Lxe8 30.Dh7+ Kf8 31.La2 Se7 32.De4 d3 33.Lb3 d2 34.Ld1 Lc6 35.Sg6+ Sxg6 36.Dxg6 De7 37.Kh2 De1 38.Kg3 Dg1+ 39.Kh4 Dxf2+ 40.Kh5 Le8 **0-1**

3

Koller, Hubert 2089

Aigner, Georg 1786

1.e4 e5 2.Sf3 Sc6 3.Lb5 a6 4.La4 Sf6 5.0-0 b5 6.Lb3 Le7 7.Te1 d6 8.d4 Lg4 9.d5 Sd4 10.Dd3 Lxf3 11.gxf3 Dd7 12.c3 Sxb3 13.axb3 0-0 14.Sd2 Sh5 15.Sf1 f5 16.exf5 Dxf5 17.Dxf5 Txf5 18.Kg2 Taf8 19.Le3 Txf3 20.Sg3 g6 21.Sxh5 gxh5 22.Txa6 Lh4 23.Te2 T3f7 24.c4 bxc4 25.bxc4 Tg7+ 26.Kf1 Tg4 27.Tc6 Ld8 28.b4 Tf3 29.b5 Th3 30.Ta2 Kf7 31.Ta7 Kf6 32.b6 cxb6 33.Txd6+ Kf5 34.Txd8 Txc4 35.Lxb6 Txh2 36.Le3 Tb4 37.Ta2 Tb3 38.Kg1 Th4 39.Tf8+ Ke4 40.Ta4+ **1-0**

4

Klueber, Werner 1769

Urytskyy, Arkadiy 2084

1.d4 Sf6 2.c4 e6 3.Sc3 Lb4 4.Dc2 d5 5.a3 Lxc3+ 6.Dxc3 0-0 7.e3 b6 8.Sf3 Lb7
9.b4 dxc4 10.Lxc4 Sbd7 11.Le2 c5 12.0-0 Tc8 13.dxc5 bxc5 14.b5 Sd5 15.Db3
c4 16.Lxc4 S7b6 17.Lxd5 Lxd5 18.Dd1 Lc4 19.Dxd8 Tfxd8 20.Te1 Lxb5 21.Sd4
La4 22.Ld2 e5 23.Sf3 Sc4 24.Lb4 a5 25.Le7 Td7 26.Lh4 f6 27.Tec1 Lb3 28.g4
a4 29.Lg3 Tcd8 30.h4 Td1+ 31.Kh2 Txc1 32.Txc1 Sxa3 33.Se1 Sc4 34.Sc2 Td2
35.Sa1 Sxe3 36.Kh3 Sc2 37.f3 Sd4 38.Le1 Td3 39.Tc3 Td1 40.Sxb3 axb3 41.Lf2
b2 **0-1**

5

Miskevicer, Boris 2079

Hansch, Klaus-Michael 1766

1.d4 Sf6 2.c4 c5 3.Sf3 cxd4 4.Sxd4 Sc6 5.Sc3 a6 6.e4 d6 7.Le2 e6 8.0-0 Le7
9.Le3 Sxd4 10.Lxd4 Ld7 11.f4 0-0 12.e5 Se8 13.Lf3 Dc7 14.Tc1 Lc6 15.Sa4 dxe5
16.Lxe5 Lxa4 17.Dxa4 Db6+ 18.Kh1 Lf6 19.c5 Da7 20.Dd7 Lxe5 21.fxe5 Db8
22.Dxb7 Dxb7 23.Lxb7 Tb8 24.c6 Sc7 25.Tfd1 Tfd8 26.Td7 **1-0**

6

Leuschner, Guenter 1755

Daeubler, Heinrich 2044

1.d4 d5 2.c4 c6 3.Sf3 e6 4.e3 Ld6 5.Sc3 f5 6.Ld3 Sf6 7.0-0 0-0 8.b3 Se4
9.Dc2 Sd7 10.Se2 Tf6 11.Lb2 Th6 12.Se5 Dh4 13.h3 g5 14.cxd5 cxd5 15.Tac1
Sdf6 16.Sf3 Dh5 17.Se5 Dh4 18.Sf3 Dh5 19.Se5 Dh4 20.Sf3 **1/2-1/2**

7

Goy, Udo 2032

Braeu, Ludwig 1759

1.d4 g6 2.e4 Lg7 3.Sc3 c5 4.dxc5 Da5 5.Sf3 Lxc3+ 6.bxc3 Dxc3+ 7.Ld2 Dxc5
8.Tb1 Sc6 9.Tb5 Da3 10.Da1 f6 11.Ld3 b6 12.h4 h5 13.e5 Kf7 14.Th3 Da4
15.Tg3 La6 16.Lxg6+ Kf8 17.Tb3 Lc4 18.Tc3 Dxa2 19.Dc1 Lf7 20.Le4 Ld5 21.Ta3
Dc4 22.Ld3 **1-0**

8

Kaufmann, Helmut 1742

Roeder, Gerd 2016

1.g3 d5 2.Lg2 e5 3.d3 c5 4.Sc3 d4 5.Sb1 Sc6 6.e4 Ld6 7.Se2 h5 8.h4 Lg4 9.f3
Le6 10.0-0 c4 11.c3 Lc5 12.Kh2 dxc3 13.Sexc3 Dxd3 14.Dxd3 cxd3 15.Sd2 0-0-0
16.Td1 Sb4 17.Sf1 Sc2 18.Tb1 Se7 19.b3 a6 20.Lb2 f6 21.Sa4 La7 22.Lc3 Td7
23.La5 Kb8 24.Lb6 Tc8 25.Td2 Tc6 26.Lxa7+ Kxa7 27.Tbd1 Sb4 28.Sb2 Sxa2
29.Txd3 Txd3 30.Txd3 Sc1 31.Td8 Sxb3 32.Se3 Sd4 33.f4 Tc3 34.Sbd1 Td3
35.Te8 Sec6 36.Lf1 Td2+ 37.Lg2 Lg4 38.Sxg4 hxg4 39.Se3 Sf3+ 40.Kh1 Te2
41.Lxf3 gxf3 42.Sg4 Txe4 43.Kg1 Sd4 44.Te7 Te1+ 45.Kf2 Te2+ **0-1**

9

Straub, Peter 2009

Wolf, Reinhard 1731

1.d4 Sf6 2.Sf3 e6 3.c4 d5 4.g3 c6 5.Lg2 Ld6 6.b3 Sbd7 7.Lb2 Se4 8.0-0 0-0

9.Sc3 f5 10.e3 Sdf6 11.Se5 Sxc3 12.Lxc3 Se4 13.Lb2 Ld7 14.Sxd7 Dxd7 15.c5
Le7 16.b4 Lf6 17.Dc2 Le7 18.f3 Sg5 19.Tfc1 h6 20.a4 Sf7 21.Dd3 Lf6 22.f4 Tfb8
23.b5 Sd8 24.Lf1 Kf7 25.Le2 g6 26.a5 cxb5 27.Dxb5 Dxb5 28.Lxb5 a6 29.Le2
Sc6 30.Lc3 Ld8 31.Tcb1 Ke7 32.Tb2 Ta7 33.Le1 Lc7 34.g4 Kf7 35.gxf5 gxf5
36.Lh5+ Ke7 37.Tg2 Tf8 38.Tg7+ Kd8 39.Lf7 Ke7 40.Lxe6+ Kxe6 41.Txc7 Se7
42.Tb1 **1-0**

10

Selig,Rainer 1966

Worschech,Roland 1730

1.d4 g6 2.c4 Lg7 3.Sf3 d6 4.Sc3 Sd7 5.e4 e5 6.Le3 Se7 7.Le2 0-0 8.Dd2 Sc6
9.0-0 exd4 10.Sxd4 Sxd4 11.Lxd4 Se5 12.f4 Sc6 13.Lxg7 Kxg7 14.f5 f6 15.Tad1
g5 16.c5 dxc5 17.De3 De7 18.Sd5 De5 19.Dxc5 Ld7 20.b4 a6 21.Sxf6 Dxc5+
22.bxc5 Kxf6 23.Txd7 Tf7 24.Txf7+ Kxf7 25.Tb1 Sd8 26.e5 Sc6 27.Lc4+ Ke8
28.f6 Sa5 29.Le2 Kf7 30.Te1 Sc6 31.Lc4+ Kf8 32.e6 Ke8 33.Le2 Kf8 34.Lh5 **1-0**

11

Stolpynskyy,Mark 1943

Zehfuss,Helmut 1710

1.d4 Sf6 2.Sf3 g6 3.Lf4 d6 4.h3 Lg7 5.e3 0-0 6.Le2 c5 7.c3 cxd4 8.exd4 Da5
9.Sbd2 Ld7 10.0-0 Sc6 11.Lh2 b5 12.a3 Db6 13.Te1 Tfe8 14.Ld3 Tac8 15.Db3
Sa5 16.Da2 h6 17.Lxg6 e6 18.Ld3 Lc6 19.Lxd6 Ld5 20.Lc5 Dc7 21.Db1 a6 22.b4
Sc6 23.Se4 Sxe4 24.Lxe4 Dd7 25.Lxd5 Dxd5 26.Dc1 e5 27.dxe5 Sxe5 28.Sxe5
Lxe5 29.f4 Lg7 30.Te3 Te6 31.Txe6 Dxe6 32.Dd2 Dc4 33.Dd7 Ta8 34.Ld4 Db3
35.Dg4 **1-0**

12

Abel,Hans-Peter 1715

Gerl,Hans 1917

1.c4 e5 2.Sc3 Sc6 3.g3 Sf6 4.Lg2 Lb4 5.Sf3 0-0 6.0-0 Te8 7.d4 exd4 8.Sxd4
Sxd4 9.Dxd4 Lxc3 10.Dxc3 Txe2 11.Le3 d6 12.Lf3 Lg4 13.Lxe2 Lxe2 14.Tfe1 Lh5
15.Lg5 h6 16.Lxf6 gxf6 17.Te3 Kg7 18.Tae1 Dd7 19.Kg2 Lg4 20.f3 Lh3+ 21.Kf2
Le6 22.Te4 Kg6 23.b3 c6 24.Tf4 f5 25.h3 Tg8 26.Td1 Kh7 27.Dd3 d5 28.cxd5
cxd5 29.g4 Dc7 30.Txf5 Lxf5 31.Dxf5+ Kh8 32.Kg2 **1/2-1/2**

13

Reichwald,Klaus 1707

Kochseder,Georg 1892

1.e4 c5 2.Sc3 d6 3.Sge2 Sc6 4.d3 g6 5.g3 Lg7 6.Lg2 e5 7.0-0 Sge7 8.Lg5 f6
9.Ld2 0-0 10.f4 Le6 11.Kh1 Dd7 12.Sd5 Lg4 13.c3 Sxd5 14.exd5 Se7 15.De1
Lh3 16.Df2 Lxg2+ 17.Dxg2 Db5 18.c4 Dxb2 19.Lc3 Db6 20.Tfb1 Dc7 21.Ld2 b6
22.Sc3 Sf5 23.fxe5 fxe5 24.Se4 Sd4 25.Le3 De7 26.Lg5 Dd7 27.Le3 h6 28.Tf1
Kh7 29.Lxd4 exd4 30.Txf8 Txf8 31.Tf1 Txf1+ 32.Dxf1 De7 33.Df4 Le5 34.Dg4 Df7
35.Kg2 Kg7 36.Df3 Dxf3+ 37.Kxf3 Kf7 38.h3 Ke7 39.g4 Lf6 40.Ke2 Le5 41.Kd2
Kd7 42.Kc2 a6 43.a4 **1/2-1/2**

14

Neubauer,Jaroslaus 1889

Boldt,Heinrich 1701

1.e4 d6 2.d4 Sf6 3.Sc3 e5 4.Sf3 exd4 5.Sxd4 g6 6.Le2 Lg7 7.Le3 0-0 8.0-0 Sbd7
9.Sb3 Te8 10.f3 b6 11.Dd2 Lb7 12.Tad1 a5 13.a4 Se5 14.Lg5 Dd7 15.f4 Seg4
16.h3 Sh6 17.f5 Sxe4 18.Sxe4 Lxe4 19.Lxh6 Lxh6 20.Dxh6 Lxf5 21.Sd4 **1-0**

15
Simin,Vladimir 1883

Schoenfelder,Heinrich 1692
1.c4 Sf6 2.Sc3 g6 3.d4 d6 4.e4 Lg7 5.Le2 0-0 6.Sf3 Sbd7 7.0-0 e5 8.d5 Sc5
9.Sd2 a5 10.b3 Se8 11.Lb2 f5 12.f3 Sf6 13.a3 f4 14.b4 axb4 15.axb4 Txa1
16.Dxa1 Sa6 17.La3 c5 18.bxc5 Sxc5 19.Lxc5 dxc5 20.Da7 Sd7 21.Sa4 b6 22.Tb1
Tf6 23.Sc3 Lf8 24.Sb5 Le7 25.Td1 Ld6 26.Sb1 Sb8 27.S1c3 Tf7 28.Da8 Lb7
29.Da4 Lf8 30.Sa7 Td7 31.Tb1 Td6 32.Da1 Df6 33.Ld1 La6 34.Lb3 Lb7 35.La4
Le7 36.Lb5 Kf7 37.Da4 g5 38.Le8+ Kg7 39.Sc6 Lxc6 40.dxc6 Sxc6 41.Lxc6 Txc6
42.Sd5 Dd6 43.Sxe7 Dd4+ 44.Kh1 Tf6 45.Sf5+ Txf5 46.exf5 Dd3 47.Td1 Dxf5
48.Dd7+ Dxd7 49.Txd7+ **1-0**

16
Rueckleben,Hermann 1876

Janzen,Christian 1579
1.c4 e6 2.Sf3 d5 3.g3 c6 4.b3 Le7 5.Lb2 Lf6 6.d4 Se7 7.Lg2 Sa6 8.Dd2 Sc7
9.0-0 0-0 10.Sc3 g6 11.e4 Lg7 12.Tfe1 Te8 13.Tad1 b6 14.h4 La6 15.Lf1 Kh8
16.La3 Sg8 17.g4 f6 18.Df4 Lb7 19.Dg3 Tc8 20.Te3 Lf8 21.Lb2 Ld6 22.e5 Lf8
23.exf6 Dxf6 24.g5 Dd8 25.Se5 Kg7 26.h5 gxh5 27.Tf3 Ld6 28.Tf7+ Kh8 29.g6
Sf6 30.Df4 Sg4 31.Txh7+ **1-0**

17
Babichev,Vyacheslav 1689

Duerr,Rainer 1861
1.b3 d5 2.Lb2 c5 3.e3 Sc6 4.Lb5 Ld7 5.Sf3 a6 6.Le2 e6 7.0-0 Sf6 8.d3 Le7
9.Sbd2 Dc7 10.h3 0-0 11.Te1 b5 12.a3 Tac8 13.Tc1 Tfd8 14.Lf1 Le8 15.De2 Db8
16.g3 Sd7 17.e4 d4 18.Sh2 e5 19.h4 Sf8 20.Lh3 Ld7 21.Lg2 Dd6 22.Tf1 Se6
23.Ta1 Ta8 24.a4 Tdb8 25.axb5 axb5 26.Tfb1 Dc7 27.La3 Ta7 28.Dd1 Tba8
29.Lb2 Sb4 30.Txa7 Txa7 31.Shf3 Ld6 32.Se1 Ta6 33.Lh3 Sf8 34.Lxd7 Sxd7
35.Ta1 Da7 36.Txa6 Dxa6 37.Da1 Dxa1 38.Lxa1 **1/2-1/2**

18
Krafzik,Joachim 1819

Alefs,Willi 1533
1.b4 Sf6 2.Lb2 e6 3.b5 d5 4.e3 Ld6 5.f4 Sbd7 6.Sf3 De7 7.Se5 0-0 8.Le2 Se4
9.0-0 f6 10.Sxd7 Lxd7 11.c4 c6 12.a4 e5 13.f5 Lc5 14.Db3 d4 15.d3 Sd6 16.e4
Df7 17.La3 Lxa3 18.Sxa3 cxb5 19.axb5 b6 20.Db4 Sb7 21.Sc2 g6 22.Lg4 g5
23.Dd2 Kh8 24.De2 Le8 25.Dd2 h5 26.Le2 Dg7 27.Sb4 Sc5 28.Ta3 g4 29.Tfa1
Tf7 30.Sd5 Td7 31.Sxb6 Tad8 32.Sxd7 Lxd7 33.Txa7 Sb3 34.Db2 Sxa1 35.Txa1
h4 36.Dd2 Lc8 37.g3 hxg3 38.hxg3 Kh7 39.Kg2 Kg8 40.Th1 Lb7 41.Th4 Kf7
42.Txg4 Dh7 43.Th4 Dxf5 44.Lf3 **1-0**

19
Schindler,Jan 1637
Knollmueller,Peter 1815

1.Sf3 d5 2.d4 Sf6 3.c4 e6 4.Sc3 Le7 5.Lf4 c6 6.e3 0-0 7.Ld3 Sbd7 8.h3 dxc4
9.Lxc4 b5 10.Ld3 Lb7 11.0-0 a6 12.Te1 c5 13.dxc5 Sxc5 14.Le2 Db6 15.Le5 Tfd8
16.Dc2 Tac8 17.Ld4 Dc6 18.Lxc5 Dxc5 19.Db1 b4 20.Sa4 Da5 21.b3 Le4 22.Db2
Tc2 23.De5 Dxe5 24.Sxe5 Tdd2 25.Ld1 Txa2 26.Txa2 Txa2 27.f3 Lc2 28.Lxc2
Txc2 29.Kf1 Sd5 30.Sc4 f5 31.e4 fxe4 32.Txe4 Sc7 33.Td4 Kf8 34.Td7 Sd5
35.Ta7 Sc3 36.Sxc3 bxc3 37.Txa6 Lh4 38.Ta1 Tf2+ 39.Kg1 c2 40.Se3 Te2
41.Sxc2 Txc2 42.Tb1 Lf6 43.Kf1 Ke7 44.Td1 Tb2 45.Td3 Lh4 46.Td4 Lg3 47.Td3
Tf2+ 48.Kg1 Tb2 49.Kf1 h5 50.Tc3 h4 51.Td3 Kf6 52.Tc3 e5 53.Td3 Kf5 54.Tc3
g5 55.Td3 Tf2+ 56.Kg1 Te2 57.Kf1 Te1# **0-1**

20

Schuster,Herbert 1615

Fischer,Gerd 2008

1.d4 c5 2.Sf3 cxd4 3.Sxd4 d5 4.g3 e5 5.Sb3 Sc6 6.Lg2 Le6 7.Sc3 Lb4 8.Ld2
Lxc3 9.Lxc3 d4 10.Ld2 Ld5 11.Lxd5 Dxd5 12.0-0 Sf6 13.e3 0-0 14.exd4 exd4
15.c3 d3 16.Le3 Se5 17.Sd2 Se4 18.f4 Sxd2 19.Lxd2 Sc4 20.b3 Dc5+ 21.Tf2
Sd6 22.Df3 Tfe8 23.Dxd3 Se4 24.Le3 Sxf2 25.Lxf2 Dc6 26.Ld4 Tad8 27.Tf1 a6
28.Df3 Te4 29.f5 f6 30.Kg2 Tde8 31.Tf2 T8e7 32.Kh3 De8 33.a4 Df7 34.b4 Dd5
35.a5 Db3 36.Dd3 Dd5 37.Df3 Dc6 38.Dd3 h5 39.Df3 De8 40.Dd3 h4 41.Df3
hxc3 42.hxc3 Te2 43.Txe2 Txe2 44.Dg4 Te1 45.Lxf6 Th1+ 46.Kg2 Dc6+ 47.Kf2
Th2+ 48.Ke3 Dxf6 49.Dc4+ Kh7 50.Ke4 De7+ 51.Kf3 Dd6 52.De4 Dd1+ 53.Kf4
Tf2+ 54.Kg5 Dd2+ 55.Kg4 De2+ 56.Dxe2 Txe2 57.Kg5 Te3 58.g4 Txc3 59.f6
gxf6+ 60.Kxf6 Tc4 **0-1**

21

Glueck,Josef 1899

Neumeister,Herbert 1716

1.Sf3 d5 2.c4 c6 3.e3 Sf6 4.Sc3 Lg4 5.Db3 Db6 6.cxd5 Dxb3 7.axb3 Lxf3 8.gxf3
cxd5 9.Sb5 Kd7 10.Txa7 Txa7 11.Sxa7 e6 12.Sb5 Lb4 13.Le2 Sa6 14.Sd4 Tc8
15.Lb5+ Ke7 16.Ke2 g6 17.Ld3 Sc5 18.Lc2 e5 19.Sb5 Se6 20.Kd1 e4 21.Tg1 h6
22.f4 Tc5 23.Sc3 La5 24.b4 Lxb4 25.Sa2 Tb5 26.Sxb4 Txb4 27.b3 Tb6 28.La3+
Kd7 29.d3 exd3 30.Lxd3 Txb3 31.Lc1 Txd3+ 32.Kc2 Sc5 33.f3 Kc6 34.Lb2 Sfd7
35.f5 g5 36.Te1 Tb3 37.Te2 f6 38.f4 gxf4 39.exf4 Tf3 40.Te6+ Kb5 41.Lxf6 Sxf6
42.Txf6 Tf2+ 43.Kd1 Txf4 44.Txh6 Txf5 45.h4 Tf2 46.Td6 Kc4 47.h5 Th2 48.h6
d4 49.Tg6 b5 **0-1**

22

Malik,Heinz 1568

Walther,Reinhard 1885

1.d4 Sf6 2.c4 g6 3.Sc3 Lg7 4.g3 c6 5.Lg2 d5 6.cxd5 cxd5 7.Sf3 Sc6 8.0-0 0-0
9.b3 Se4 10.Lb2 f5 11.e3 Le6 12.Tc1 Dd7 13.Sd2 Tac8 14.f3 Sd6 15.f4 Se4
16.Sf3 Lf7 17.Sxe4 fxe4 18.Sg5 Le6 19.Sxe6 Dxe6 20.g4 Dd6 21.Tf2 e6 22.g5
Tf7 23.h4 Tfc7 24.Tfc2 Se7 25.Txc7 Txc7 26.Lh3 Sf5 27.Lxf5 exf5 28.Txc7 Dxc7
29.Dc1 Dxc1+ 30.Lxc1 Lf8 31.Kf2 Kf7 32.Ke2 Ke6 33.Kd1 Kd7 34.Ld2 Kc6 35.Kc2
b6 36.a4 b5 37.axb5+ Kxb5 38.Kb2 a5 39.Lc3 Lb4 40.Kc2 La3 41.Ld2 a4
42.bxa4+ Kxa4 43.Le1 Ld6 44.Ld2 Lc7 45.Kb2 Lb6 46.Lc3 Ld8 47.Ld2 Le7 48.Kc2
Lf8 49.Le1 h6 50.Ld2 hxc3 51.hxc3 La3 52.Le1 Kb5 53.Ld2 Kc4 54.Le1 Ld6
55.Ld2 Lxf4 56.exf4 Kxd4 57.La5 Ke3 58.Ld2+ Kf3 59.Kd1 d4 60.Ke1 e3 61.Lc1
d3 62.La3 Kxf4 63.Lc5 Kf3 64.Ld4 Ke4 65.Lb6 f4 66.La5 f3 **0-1**

23

Siegl, Wolfgang 1522

Pidtoptanyy, Igor 1821

1.g3 e5 2.Lg2 Sf6 3.d3 Lc5 4.Sf3 Sc6 5.0-0 0-0 6.Sxe5 Sxe5 7.d4 Ld6 8.dxe5
Lxe5 9.Sd2 d5 10.Sf3 Ld6 11.Lg5 c6 12.Dd3 h6 13.Lxf6 Dxf6 14.c3 Lf5 15.Dd2
Tad8 16.Sd4 Lg6 17.Tad1 Tfe8 18.e3 Lh5 19.Tde1 Lc5 20.Se2 Lg6 21.Sd4 Te7
22.De2 Tde8 23.Df3 Dd6 24.Dd1 Df6 25.Df3 Ld6 26.Dxf6 gxf6 **0-1**

24

Otto, Klaus 1499

Zschorsch, Peter 1788

1.e4 d6 2.d4 Sc6 3.Sf3 Lg4 4.Le3 e6 5.Le2 Sf6 6.Sc3 Le7 7.0-0 0-0 8.Sd2 Lxe2
9.Dxe2 e5 10.Sb3 exd4 11.Sxd4 Sxd4 12.Lxd4 Te8 13.Tad1 Dc8 14.f3 a6 15.Dd3
b5 16.a3 De6 17.Tfe1 c6 18.e5 Sh5 19.exd6 Dxd6 20.Le5 Dxd3 21.cxd3 f6
22.Lg3 Lc5+ 23.Kf1 Txe1+ 24.Txe1 Td8 25.Te6 Sxg3+ 26.hxg3 Td6 27.Txd6 Lxd6
28.g4 Le5 29.Sd1 Kf7 30.Ke2 Ke6 31.Ke3 c5 32.b3 g6 33.f4 Ld4+ 34.Kf3 Kd5
35.Se3+ Lxe3 36.Kxe3 c4 37.bxc4+ bxc4 38.dxc4+ Kxc4 39.Ke4 a5 40.f5 g5
41.a4 Kc5 42.Kd3 Kb4 43.Kd4 Kxa4 44.Kd5 Kb5 45.Ke6 a4 46.Kxf6 a3 47.Kxg5
a2 48.f6 a1D 49.f7 Dg7+ **0-1**

25

Peiberg, Ehrhard 1483

Kolkwitz, Klaus 1784

1.d4 Sf6 2.c4 g6 3.Sc3 d5 4.Lf4 c6 5.e3 Lg7 6.Le2 0-0 7.h3 Sbd7 8.Sf3 Te8
9.0-0 e6 10.Dc2 dxc4 11.Lxc4 Sd5 12.Lg3 a5 13.a3 S7f6 14.Ld3 Sxc3 15.Dxc3
Sd5 16.Dc2 f6 17.Tad1 Se7 18.Le4 Sf5 19.Lh2 Lf8 20.Db3 **1/2-1/2**

26

Huetter, Heinz 1438

Reimann, Guenther 1768

1.d4 e6 2.g3 f5 3.Sf3 Sf6 4.c3 Le7 5.Lg2 d5 6.Sbd2 Sbd7 7.0-0 Ld6 8.e3 0-0
9.Dc2 c6 10.c4 Se4 11.c5 Lc7 12.b4 e5 13.Lb2 Sxd2 14.Dxd2 e4 15.Se1 Sf6
16.f4 De8 17.Sc2 Ld7 18.Tfe1 Sg4 19.h3 Sf6 20.a4 a6 21.Lf1 Sh5 22.Kh2 Tf6
23.Le2 Th6 24.Lxh5 Dxh5 25.Dg2 Ld8 26.Th1 g5 27.Lc3 Tg6 28.Kg1 Kf7 29.Te1
gxf4 30.exf4 Lh4 31.Te3 Tag8 32.Le1 Dh6 33.Th2 Dg7 34.De2 Lxg3 35.Lxg3
Txg3+ 36.Txg3 Dxg3+ 37.Tg2 Dxh3 38.Txg8 Kxg8 39.Dg2+ Dxg2+ 40.Kxg2 Kf7
41.Kg3 **1/2-1/2**

27

Ewald, Frithjof 1355

Perzl, Michael 1754

1.e4 c5 2.Sf3 d6 3.Lc4 Sf6 4.Sc3 a6 5.a3 b5 6.La2 Sbd7 7.d3 Lb7 8.0-0 e6
9.Te1 Dc7 10.h3 Le7 11.Ld2 0-0 12.De2 Tfe8 13.b4 Tac8 14.Tac1 Db8 15.Lg5
cxb4 16.Sd1 bxa3 17.Ld2 Sb6 18.La5 Sa8 19.Sc3 d5 20.e5 Sd7 21.d4 Sab6
22.Sd2 Da8 23.f3 Lc6 24.Tb1 Sc4 25.Sxc4 dxc4 26.Se4 Da7 27.c3 Sb6 28.Sd6
Lxd6 29.exd6 Sd5 30.De5 f6 **0-1**

28

Appel, Juergen 1650

Oser, Thor 1622

1.d4 d5 2.Sf3 e6 3.e3 Sf6 4.c4 c6 5.Sc3 Ld6 6.Ld3 h6 7.0-0 0-0 8.e4 dxe4
9.Sxe4 Sxe4 10.Lxe4 Sd7 11.Lc2 Te8 12.Dd3 Sf8 13.Le3 b6 14.Tad1 Lb7 15.De2
Dc7 16.Tfe1 Tad8 17.a3 c5 18.dxc5 bxc5 19.h3 Le7 20.Ld2 Lf6 21.b3 Te7 22.Le4
Ted7 23.Lxb7 Dxb7 24.b4 Dc6 25.b5 Dc7 26.Le3 Sg6 27.Txd7 Txd7 28.Td1
Txd1+ 29.Dxd1 Sh4 30.Sxh4 Lxh4 31.Dg4 De7 32.Lxh6 f5 33.Dg6 Lf6 34.Le3 Ld4
35.Lg5 Dd7 36.Dh5 e5 37.Dg6 e4 38.Dc6 Df7 39.Dd5 Dxd5 40.cxd5 Kf7 41.a4 c4
42.Kf1 c3 43.Ke2 Ke8 44.Le3 Lxe3 45.fxe3 Kd7 46.a5 Kd6 47.b6 a6 48.g3 g6
49.h4 Kd7 50.Kd1 **1-0**

29

Flockerzi, Armin 1565

Hein, Manfred 1943

1.Sf3 d5 2.d4 Sf6 3.g3 h6 4.Lg2 c6 5.b3 Lf5 6.Sbd2 e6 7.Lb2 Sbd7 8.0-0 Le7
9.Te1 0-0 10.Dc1 Se4 11.c4 Tc8 12.c5 b6 13.b4 bxc5 14.dxc5 Tb8 15.a3 a5
16.Se5 Sxe5 17.Lxe5 Sxd2 18.Dxd2 Tb5 19.e4 dxe4 20.Dxd8 Lxd8 21.Ld6 Te8
22.Lxe4 Lxe4 23.Txe4 Lf6 24.Tb1 Lc3 25.Lc7 axb4 26.axb4 Ta8 27.Le5 Lxe5
28.Txe5 Tab8 29.Te4 Txc5 30.Td4 Tcb5 31.Tc1 Txb4 32.Txb4 Txb4 33.Txc6 g5
34.h3 Kg7 35.Td6 h5 36.Kg2 Tb2 37.Tc6 g4 38.hxg4 hxg4 39.Tc4 f5 40.Tc7+ Kf6
41.Tc6 Te2 42.Kf1 Td2 43.Tc4 Tb2 44.Ta4 Tb6 45.Ta8 Td6 46.Tf8+ Ke5 47.Tf7
Ke4 48.Kg2 e5 49.Te7 Td1 50.Tg7 Td8 51.Tg6 Tf8 52.Tg7 Tf6 53.Tg8 Kd5
54.Td8+ Td6 55.Tf8 Ke6 56.Te8+ Kf6 57.Tf8+ Kg6 58.Te8 e4 59.Kf1 Kf7 60.Te5
Kf6 61.Te8 Te6 62.Txe6+ Kxe6 63.Ke2 Kd5 64.Kd2 Ke6 65.Ke2 Ke5 66.Ke3 f4+
67.Ke2 fxg3 68.fxg3 Kd4 69.Kd2 e3+ 70.Ke2 Ke4 71.Kf1 Kf3 72.Ke1 Kxg3 **0-1**

30

Klein, Klaus 1809

Moderegger, Ludwig 1528

1.e4 e5 2.Sf3 Sc6 3.Lb5 Sf6 4.0-0 d6 5.d4 Ld7 6.Sc3 exd4 7.Sxd4 Se5 8.Lg5 a6
9.Lxd7+ Sexd7 10.Kh1 Le7 11.Sf5 0-0 12.Sxe7+ Dxe7 13.Df3 c6 14.Tad1 Se5
15.Lxf6 gxf6 16.Df5 Kh8 17.f4 Sg6 18.Td3 Tg8 19.g3 De6 20.Dxe6 fxe6 21.Txd6
Tge8 22.Tfd1 Tac8 23.Sa4 Sf8 24.Sc5 Tc7 25.Td8 Txd8 26.Txd8 Kg7 27.Txf8 Te7
28.Td8 **1-0**

31

Stephan, Hubert 1540

Hermann, Josef 1687

1.e4 e6 2.d4 d5 3.exd5 exd5 4.Ld3 Ld6 5.Sf3 Lg4 6.0-0 Df6 7.Te1+ Se7 8.Lg5
Dxg5 9.Sxg5 Lxd1 10.Txd1 h6 11.Sf3 0-0 12.c3 Sd7 13.Sbd2 Sf6 14.Te1 Sg6
15.Se5 Sf4 16.Lc2 Tfe8 17.Sdf3 Te7 18.g3 Se6 19.Te3 Lxe5 20.Sxe5 Tae8
21.Tae1 g6 22.b4 c6 23.Sxg6 Td7 24.Se5 Tde7 25.Kg2 Kg7 26.h3 Sg5 27.Sg4
Txe3 28.Txe3 Txe3 29.Sxe3 b5 30.f3 **1-0**

32

Garms, Ilse 1532

Niedermaier, Peter 1684

1.d4 Sf6 2.Sf3 g6 3.c4 Lg7 4.Sc3 d5 5.e3 0-0 6.cxd5 Sxd5 7.Db3 Sb6 8.Le2 Le6
9.Dc2 Sa6 10.a3 c6 11.0-0 Sc7 12.Td1 a5 13.a4 Sa6 14.Sa2 Lxa2 15.Lxa6 Txa6
16.Txa2 Sd5 17.Ld2 Sb4 18.Lxb4 axb4 19.b3 Dd6 20.Sd2 Tfa8 21.Sc4 Dd8

22.Sb2 e6 23.Dd2 Lf8 24.Sd3 Db6 25.Tc2 Td8 26.De1 Ta5 27.Tdc1 Th5 28.Tc4
Dc7 29.f4 Da5 30.Sxb4 b5 31.axb5 cxb5 32.Ta1 Dxa1 33.Dxa1 bxc4 34.Sc6 Td6
35.Se5 cxb3 36.Db2 Tb6 37.Sd7 Thb5 38.Sf6+ Kg7 39.Sd7 f6 40.g4 **1-0**

33

Walch,Roger 1681

Steffl,Herbert 1512

1.e4 e6 2.d4 d5 3.Sd2 dxe4 4.Sxe4 Sd7 5.Sf3 Sgf6 6.Sg3 c5 7.Le2 Le7 8.0-0
0-0 9.Te1 cxd4 10.Sxd4 a6 11.Lf3 Dc7 12.Sgf5 Lc5 13.Sg3 Se5 14.Le2 Td8 15.c3
Sc6 16.Dc2 Sxd4 17.cxd4 Lb6 18.Dxc7 Lxc7 19.Le3 Ld7 20.Tac1 Tac8 21.Lf3 Sd5
22.Ld2 Lb6 23.Lc3 Lc6 24.Se4 Sxc3 25.bxc3 Ld5 26.a3 La5 27.Te3 Lb6 28.Tb1
La5 29.Sc5 Lxf3 30.Txf3 b6 31.Sb7 Td5 32.Sxa5 Txa5 33.Txb6 Txa3 34.h4 g6
35.Tb7 Tf8 36.g4 a5 37.Kg2 a4 38.Ta7 h6 39.c4 Ta1 40.c5 a3 41.Tfxa3 Txa3
42.Txa3 Tc8 43.Kf3 e5 44.Ke4 exd4 45.Kxd4 Kf8 46.Kd5 Td8+ 47.Kc6 f5 48.gxf5
gxf5 49.Tf3 Td4 50.Txf5+ Ke7 51.h5 Ke6 52.Tf3 Th4 53.Te3+ Kf6 54.Kc7 Txb5
55.c6 Tf5 56.Th3 Txf2 57.Txb6+ Ke7 58.Kc8 Tf8+ 59.Kb7 Tf1 60.c7 **1-0**

34

Rosmann,Armin 1505

Schroeder,Klaus 1680

1.e4 c6 2.d4 d5 3.e5 e6 4.Sf3 c5 5.c3 Sc6 6.Le2 cxd4 7.cxd4 Lb4+ 8.Ld2 Sge7
9.0-0 0-0 10.Lg5 Dc7 11.a3 La5 12.Sbd2 Lxd2 13.Dxd2 Ld7 14.Tac1 Db6 15.b4
Sf5 16.Tc5 a6 17.g4 Sfe7 18.Lf6 Sg6 19.h4 gxf6 20.exf6 Dd8 21.Dg5 b6 22.Tc3
Tc8 23.Lxa6 Sxd4 24.Lxc8 Se2+ 25.Kh2 Sxc3 26.Lxd7 Se4 27.Dh6 Dxf6 28.Kg2
Sf4+ **0-1**

35

Stadler,Lothar 1674

Kunert,Helmut 1491

1.c4 e5 2.Sc3 Sf6 3.e4 Lc5 4.Le2 Sc6 5.a3 a5 6.Sf3 b6 7.d3 0-0 8.Lg5 Le7
9.Dd2 Sd4 10.Ld1 d6 11.0-0 Lg4 12.Lxf6 Lxf6 13.Sxd4 exd4 14.Lxg4 dxc3
15.bxc3 Tb8 16.d4 c5 17.f4 b5 18.cxb5 cxd4 19.cxd4 Db6 20.Tfd1 Tfe8 21.Dd3
Dxb5 22.Dxb5 Txb5 23.Ld7 **1-0**

36

Sandner,Josef 1461

Klimpel,Siegfried 1662

1.d4 e6 2.e3 b6 3.f4 Sf6 4.Sf3 c5 5.c3 Le7 6.Ld3 Lb7 7.Sbd2 d6 8.De2 Sc6
9.0-0 h6 10.Lc2 Dc7 11.g3 0-0 12.h3 e5 13.dxe5 dxe5 14.Se4 exf4 15.Sxf6+
Lxf6 16.exf4 Tfe8 17.Dd3 g6 18.Lb3 Tad8 19.Dxg6+ Lg7 20.f5 Kh8 21.Lxf7 Se5
22.Sxe5 Dxe5 23.Lxh6 Lf6 24.Lf4 **1-0**

37

Lueders,Guenter 1659

Nieswandt,Joseph 1443

1.d4 d5 2.Sf3 Sf6 3.Lf4 e6 4.Sbd2 c5 5.c3 Sc6 6.e3 c4 7.Le2 h6 8.0-0 Ld6
9.Lxd6 Dxd6 10.b3 b5 11.a4 b4 12.cxb4 Dxb4 13.bxc4 0-0 14.c5 Da5 15.Lb5
Dc7 16.Lxc6 Dxc6 17.Dc2 Sd7 18.Tfb1 a5 19.Tb2 f6 20.Sh4 La6 21.Sg6 Tf7
22.Tab1 e5 23.Sh4 e4 24.Dd1 Ld3 25.Tc1 f5 26.g3 Taf8 27.Sg2 g5 28.Se1 Dg6

29.Sxd3 exd3 30.c6 Tb8 31.cxd7 Tff8 32.Txb8 Txb8 33.Tc8+ Txc8 34.dxc8D+ **1-0**
38

Jehn,Detlef 1449

Mehlhorn,Dieter 1656

1.e4 e5 2.Lc4 Le7 3.c3 Sf6 4.d3 d6 5.h3 Sc6 6.b4 a6 7.Sf3 0-0 8.0-0 h6 9.Sh2
d5 10.exd5 Sxd5 11.f4 Sxc3 12.Sxc3 Dd4+ 13.Kh1 Dxc3 14.Ld2 Dd4 15.a3 e4
16.Db3 exd3 17.Sf3 Dd6 18.Lxd3 Le6 19.Dc2 Tad8 20.Le4 Ld5 21.Le3 Lxe4
22.Dxe4 Dd3 23.Dxd3 Txd3 24.Lc1 Lf6 25.Ta2 Tfd8 26.Kh2 Sa7 27.Se5 Td1
28.Txd1 Txd1 29.Tc2 c6 30.Sg4 Ld4 31.Le3 Sb5 32.Lxd4 Txd4 33.g3 f6 34.Tc3
Td2+ 35.Kg1 Sd4 36.Te3 Kf7 37.Sf2 Sf5 38.Tc3 Td4 39.Kg2 Ke6 40.g4 Sd6
41.f5+ Kd7 42.Td3 Tc4 43.Kf3 Ke7 44.Te3+ Kf7 45.Sd3 Sb5 46.Sc5 a5 47.Sxb7
axb4 48.Sd8+ Kf8 49.axb4 Sd4+ 50.Kg3 Txb4 51.Kh4 Sxf5+ **0-1**

39

Wilfert,Eva-Maria 1414

Wolfram,Gisbert 1637

1.d4 d5 2.c4 c6 3.Sc3 Sf6 4.Lf4 Lf5 5.cxd5 cxd5 6.Db3 Db6 7.Dxb6 axb6 8.Sb5
Sa6 9.Tc1 Tc8 10.Txc8+ Lxc8 11.Sc7+ Sxc7 12.Lxc7 b5 13.e3 Ld7 14.Sf3 e6
15.a3 b4 16.Ld3 bxa3 17.bxa3 Lxa3 18.Ke2 0-0 19.Tb1 Lc6 20.Se5 Tc8 21.La5
Kf8 22.Lb4+ Lxb4 23.Txb4 Tc7 24.g4 h6 25.h4 Se8 26.g5 hxg5 27.hxg5 Sd6
28.f3 Ke7 29.Tb1 Tc8 30.Th1 Lb5 31.Th7 Lxd3+ 32.Kxd3 g6 33.Sxg6+ Ke8 34.Th8+
Kd7 35.Txc8 Sxc8 36.Se5+ Ke7 37.Sg4 Sd6 38.Sh6 Kf8 39.e4 dxe4+ 40.fxe4 b5
41.Sg4 Kg7 42.Se5 f6 43.gxf6+ Kxf6 44.Sd7+ Ke7 45.Sb6 Kd8 46.d5e5 47.Ke3
Kc7 48.Sa8+ Kb7 49.Kd3 Kxa8 50.Kc3 Kb7 51.Kd3 Kb6 52.Kc3 Kc5 **0-1**

40

Rudek,Gerald 1394

Alefs,Heinz 1627

1.f4 Sf6 2.Sf3 d6 3.e3 b6 4.b3 Lb7 5.Lb2 Sbd7 6.Le2 e6 7.0-0 Le7 8.Sd4 c5
9.Lf3 d5 10.Se2 Dc7 11.Sa3 0-0 12.c4 Tad8 13.Sg3 dxc4 14.bxc4 a6 15.De2 e5
16.Lxb7 Dxb7 17.fxe5 Se8 18.Sf5 Sb8 19.Dg4 Txd2 20.Lc3 Td3 21.Lb2 Td2
22.Lc3 Td3 23.Lb2 Td2 **1/2-1/2**

41

Koenigl,Anton 1696

Jaghuber,Hans 1876

1.d4 e6 2.Sf3 b6 3.c4 Lb7 4.g3 Lxf3 5.exf3 c5 6.Lg2 cxd4 7.Dxd4 Sc6 8.Dd1
Tc8 9.Sd2 Se5 10.De2 Dc7 11.b3 **1/2-1/2**

42

Mahrle,Hans 1626

Borkenhagen,Bernd 1391

1.e4 e5 2.Sf3 d6 3.d4 exd4 4.Sxd4 Le7 5.Ld3 Sf6 6.0-0 0-0 7.f4 c5 8.Sf3 Lg4
9.h3 Lxf3 10.Dxf3 Dc7 11.c4 Sc6 12.Sc3 a6 13.Le3 b6 14.Sd5 Sxd5 15.exd5 Sb4
16.Lb1 a5 17.a3 Sa6 18.f5 Lf6 19.Ta2 Tae8 20.b3 Sb8 21.g4 h6 22.Tg2 Kh8
23.g5 hxg5 24.Lxg5 De7 25.Dh5+ Kg8 26.Lh6 De5 27.Kh1 Dd4 28.Lxg7 Lxg7
29.f6 **1-0**

43

Husser,Oskar 1620

Hartlaub,Marianne 1348

1.Sf3 Sf6 2.c4 d6 3.g3 e5 4.d3 Le7 5.Lg2 h6 6.Sc3 c6 7.0-0 Lg4 8.Db3 Dc7
9.e4 Sbd7 10.Le3 0-0 11.Sh4 Sh7 12.h3 Le6 13.Dd1 Dd8 14.Dh5 Shf6 15.De2
Kh7 16.f4 exf4 17.Lxf4 Tg8 18.e5 Se8 19.d4 dxe5 20.dxe5 Lxh4 21.gxh4 Dxh4
22.Kh2 g5 23.Lg3 Dxc4 24.Dh5 Sg7 25.Df3 Tad8 26.Tad1 Sf5 27.Lf2 Sxe5 **0-1**

44

Neiss,Albrecht 1342

Baumgartner,Andreas 1618

1.d4 d5 2.c4 e6 3.Sc3 c6 4.cxd5 exd5 5.Lf4 Sf6 6.e3 Lb4 7.Ld3 Le6 8.h3 Sbd7
9.Sge2 0-0 10.0-0 a6 11.a3 Le7 12.Dc2 h6 13.Sg3 c5 14.Sce2 c4 15.Lf5 Tc8
16.Sc3 b5 17.f3 g5 18.Le5 Db6 19.Df2 Sxe5 20.dxe5 Sd7 21.f4 gxf4 22.Dxf4 Lg5
23.Dg4 Sxe5 24.De2 Dxe3+ 25.Dxe3 Lxe3+ 26.Kh1 d4 27.Sce2 d3 28.Sc3 Lg5
29.Sge4 Lxf5 30.Txf5 f6 31.Taf1 Kg7 32.Sd5 Tcd8 33.Sxg5 hxg5 34.Se3 d2
35.Td1 Tfe8 36.g4 Sd3 37.Sd5 Txd5 38.Txd5 Te1+ **0-1**

45

Braeu,Emmi 1331

Kammel,Rudolf 1613

1.Sf3 Sf6 2.g3 d5 3.Lg2 Lf5 4.c4 e6 5.0-0 Le7 6.b3 0-0 7.Lb2 Sbd7 8.d4 Tc8
9.Sbd2 h6 10.Tc1 b6 11.a3 c5 12.cxd5 exd5 13.dxc5 Sxc5 14.Se5 Dd6 15.Sdf3
Se6 16.b4 Le4 17.Sh4 g5 18.Shf3 Sd7 19.Sxd7 Dxd7 20.Se5 Dd6 21.Lxe4 dxe4
22.Dxd6 Lxd6 23.Sc6 Tc7 24.Tfd1 Le7 25.Le5 Tb7 26.Td5 Te8 27.Tcd1 Sf8 28.Lb2
Se6 29.Sxe7+ Texe7 30.Lf6 Tec7 31.Kg2 Tc4 32.e3 Kh7 33.Td7 Tcc7 34.T7d5
Kg6 35.Le5 Te7 36.f3 exf3+ 37.Kxf3 h5 38.h3 f6 39.Lb2 Tf7 40.e4 Sf8 41.Td6
Tbd7 42.e5 Txd6 43.Txd6 Sh7 44.e6 Te7 45.Ke4 g4 46.h4 Sf8 47.Kd5 Kf5
48.Td8 Sxe6 49.Th8 Sg7 50.Tf8 Se8 51.Th8 Kg6 52.Lc1 Te5+ 53.Kd4 Kg7 54.Th6
Sd6 55.Lf4 Sf5+ 56.Kc4 Sxh6 57.Lxe5 fxe5 58.Kd5 Kf6 **0-1**

46

Kunte,Herbert 1603

Steckel,Werner 1338

1.d4 Sf6 2.Sf3 d6 3.c4 g6 4.Sc3 Lg7 5.e4 0-0 6.Le2 c5 7.h3 Sa6 8.0-0 Ld7
9.Le3 Tc8 10.Tc1 Te8 11.Dd2 cxd4 12.Sxd4 Sc5 13.Dc2 e5 14.Sf3 Lc6 15.Ld3 a6
16.Lxc5 dxc5 17.Tcd1 Dc7 18.Le2 Tcd8 19.b3 Dc8 20.Tfe1 Sh5 21.Kh2 Sf4 22.Lf1
Se6 23.Sd5 Sd4 24.Dd3 b5 25.Sd2 Db8 26.g3 b4 27.Lg2 Td6 28.Sf1 Ld7 29.Sfe3
Dc8 30.Tf1 Lh6 31.f4 f5 32.fxe5 Txe5 33.Sc2 fxe4 34.Lxe4 Sf5 35.g4 Se7
36.Sf6+ Kg7 37.Dxd6 **1-0**

47

Jurgan,Brigitte 1225

Weyand,Fernand 1587

1.d4 Sf6 2.Sf3 e6 3.c3 d5 4.Lg5 Le7 5.Lxf6 Lxf6 6.g3 Sd7 7.Lg2 0-0 8.0-0 c5
9.e3 Db6 10.Db3 c4 11.Dxb6 axb6 12.Sbd2 b5 13.a3 Sb6 14.Tab1 Ld7 15.Tfe1
Lc6 16.e4 dxe4 17.Sxe4 Lxe4 18.Txe4 Sd5 19.Se5 Le7 20.Tee1 Tfd8 21.Lxd5
Txd5 22.f4 g6 23.Sf3 Kg7 24.Te5 Tad8 25.Tbe1 Lf6 26.Txd5 Txd5 27.Te2 Kf8
28.Sd2 Ke8 29.Se4 Le7 30.h4 Kd8 31.Sd2 h5 32.Sf3 **1/2-1/2**

48

Scheuerlein, Gerhard 1585

Malik, Rosemarie 1327

1.d4 d5 2.Sf3 Sf6 3.c4 e6 4.Sc3 c6 5.cxd5 exd5 6.Db3 Le7 7.e4 Db6 8.Dc2 dxe4 9.Sxe4 Lf5 10.Sxf6+ Lxf6 11.Dxf5 Db4+ 12.Ld2 De7+ 13.Le3 0-0 14.Ld3 g6 15.Dg4 Te8 16.0-0 Sd7 17.Tfe1 Dd6 18.Lc4 Sb6 19.Lb3 Sd5 20.Lg5 Lg7 21.h4 h6 22.Ld2 Sf6 23.Dh3 Sd5 24.Tad1 Te7 25.Txe7 Sxe7 26.Se5 Sd5 27.Sg4 h5 28.Se5 Lxe5 29.dxe5 Dxe5 30.Df3 De7 31.Lg5 Df8 32.Lxd5 cxd5 33.Txd5 Te8 34.Dd3 **1-0**

49

Walther, Renate 818

spielfrei

1-0

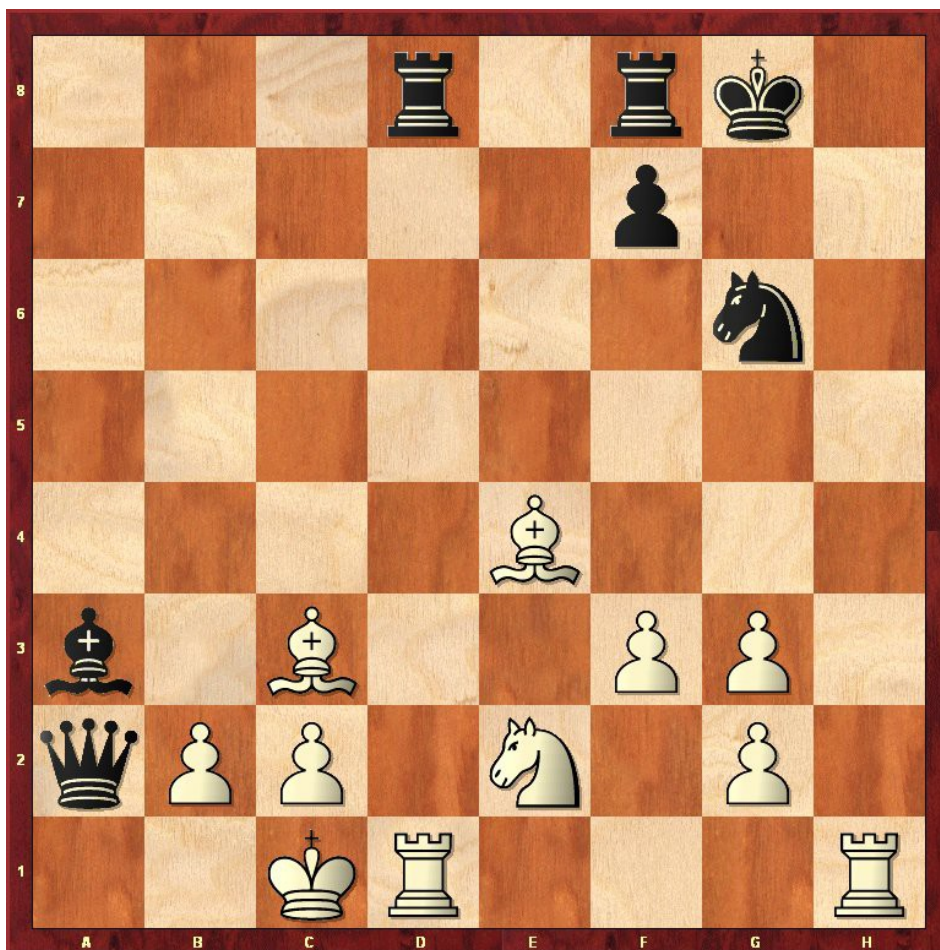
Runde 2 - Tabellen:

Pl.:	Nr.:	Teilnehmer	Tit.:	DWZ	A.:	Verein/Ort	Nat.:	Pkt.:	#DWZ:	SoBe.:
1.	1.	Röder, Frank	FM	2184	M	SV Altensittenbac	GER	2.0	1747	1.00
2.	2.	Schmidt, Gerhard		2152	M	Schachclub Unterh	GER	2.0	1745	1.50
3.	3.	Koller, Hubert		2089	M	Mostarriche/Ypps	AUT	2.0	1735	1.00
4.	4.	Urytskyy, Arkadiy		2084	M	TSV Bindlach Akti	GER	2.0	1725	2.00
5.	5.	Miskevicer, Boris		2079	M	SG Schwabing Münc	GER	2.0	1723	2.00
6.	7.	Goy, Udo		2032	M	Ford Schachfreund	GER	2.0	1711	1.00
7.	8.	Röder, Gerd, Dr.	FM	2016	M	SV Altensittenbac	GER	2.0	1701	2.00
8.	9.	Straub, Peter		2009	M	SK Mering	GER	2.0	1694	2.00
9.	11.	Selig, Rainer		1966	M	Spielver. Ebersba	GER	2.0	1684	2.00
10.	13.	Stolpynskyy, Mark		1943	M	SW Nürnberg Süd e	GER	2.0	1669	1.50
11.	17.	Neubauer, Jaroslau		1889	M	Schachklub Schwei	GER	2.0	1660	2.00
12.	19.	Šimin, Vladimir		1883	M	FC Ergolding 1932	GER	2.0	1653	2.00
13.	26.	Knollmüller, Peter		1815	M	SK Töging	GER	2.0	1589	2.00
14.	21.	Rückleben, Hermann		1876	M	SF Baden-Lichtent	GER	2.0	1583	1.00
15.	25.	Krafzik, Joachim		1819	M	SC Haar 1931	GER	2.0	1549	1.00
16.	59.	Appel, Jürgen		1650	M	Zwickauer Schachc	GER	1.5	1815	1.25
17.	37.	Leuschner, Günter		1755	M	SK Nürnberg 1911	GER	1.5	1744	0.75
18.	6.	Däubler, Heinrich		2044	M	Schachclub Haselm	GER	1.5	1715	1.75
19.	14.	Gerl, Hans, Dr.		1917	M	SK Zirndorf e.V.	GER	1.5	1671	1.75
20.	16.	Kochseder, Georg		1892	M	TV 1890 Hallstadt	GER	1.5	1664	0.75

21.	20.	Jaghuber,Hans		1876	M	SK Keres-Augsburg	GER	1.5	1650	1.75
22.	22.	Dürr,Rainer,Dr.		1861	M	SC Prien	GER	1.5	1637	1.75
23.	43.	Abel,Hans-Peter		1715	M	SC Leinfelden	GER	1.5	1633	1.75
24.	10.	Fischer,Gerd		2008	M	FC Gunzenhausen 1	GER	1.5	1633	1.25
25.	42.	Neumeister,Herber		1716	M	Schachvereinigung	GER	1.5	1627	0.75
26.	45.	Reichwald,Klaus		1707	M	SC Lohhof 1950 e.	GER	1.5	1615	0.75
27.	47.	Königl,Anton		1696	M	FC Ergolding 1932	GER	1.5	1602	0.75
28.	18.	Walther,Reinhard		1885	M	SK 1911 Herzogena	GER	1.5	1592	0.75
29.	24.	Pidtoptanyy,Igor		1821	M	SW Nürnberg Süd e	GER	1.5	1545	0.75
30.	30.	Zschorsch,Peter		1788	M	Karlsruher SF 185	GER	1.5	1511	0.75
31.	38.	Perzl,Michael		1754	M	TSV Trostberg	GER	1.5	1397	1.00
32.	49.	Babichev,Vyachesl		1689	M	SW Nürnberg Süd e	GER	1.5	1340	1.25
33.	61.	Schindler,Jan		1637	M	SC Anderssen Nürn	GER	1.0	1879	1.00
34.	72.	Janzen,Christian		1579	M	TSV Marienfelde 1	GER	1.0	1862	0.50
35.	28.	Willin,Bernhard		1807	M	SC Horben	GER	1.0	1858	1.00
36.	29.	Klein,Reinhard		1803	M	Münchener SC 1836	GER	1.0	1840	0.00
37.	76.	Alefs,Willi		1533	M	SC Fuldata	GER	1.0	1814	1.00
38.	31.	Aigner,Georg		1786	M	TSV Dietfurt/Altm	GER	1.0	1801	0.00
39.	53.	Walch,Roger		1681	M	SW Nürnberg Süd e	GER	1.0	1798	0.00
40.	54.	Schröder,Klaus		1680	M	SC Karlsdorf	GER	1.0	1792	0.00
41.	33.	Klüber,Werner		1769	M	SC Prichsenstadt	GER	1.0	1788	0.00
42.	85.	Peiberg,Ehrhard		1483	M	SC Erlangen 48/88	GER	1.0	1776	1.00
43.	35.	Hansch,Klaus-Mich		1766	M	SC Weisse Dame e.	GER	1.0	1770	1.00
44.	55.	Stadler,Lothar		1674	M	SAbt SV Weiss-BL.	GER	1.0	1768	0.00
45.	89.	Hütter,Heinz		1438	M	SC Eichenau	GER	1.0	1761	1.25
46.	75.	Stephan,Hubert		1540	M	SC Prien	GER	1.0	1751	0.00
47.	77.	Garms,Ilse		1532	W	ESV 1949 Eberswal	GER	1.0	1746	0.00
48.	36.	Bräu,Ludwig		1759	M	SK Marktoberdorf	GER	1.0	1741	0.00
49.	57.	Lüders,Günter,Dr.		1659	M	TSV 1883 Benshaus	GER	1.0	1730	0.00
50.	58.	Mehlhorn,Dieter		1656	M	Post-SV Crimmitsc	GER	1.0	1729	0.00
51.	39.	Kaufmann,Helmut		1742	M	SK Eutingen	GER	1.0	1715	0.00
52.	86.	Sandner,Josef		1461	M	SG Traunstein/Tra	GER	1.0	1714	0.00
53.	40.	Wolf,Reinhard		1731	M	SV Königsspringer	GER	1.0	1702	0.50
54.	60.	Wolfram,Gisbert,D		1637	M	SU Ebersberg-Graf	GER	1.0	1690	0.00
55.	100.	Walther,Renate		818	W	SK 1911 Herzogena	GER	1.0	1689	0.00
56.	41.	Worschech,Roland		1730	M	SK 1907 Kulmbach	GER	1.0	1679	0.00
57.	94.	Hartlaub,Marianne		1348	W	SK 1982 Klingenbe	GER	1.0	1668	0.00
58.	63.	Mahrla,Hans,Dr.		1626	M	SC Eichenau	GER	1.0	1654	0.00
59.	44.	Zehfuß,Helmut		1710	M	SG Traunstein/Tra	GER	1.0	1643	0.00
60.	66.	Baumgartner,Andre		1618		ASV J'Adoube Gras	GER	1.0	1616	0.00
61.	46.	Boldt,Heinrich		1701	M	TSV Kareth-Lapper	GER	1.0	1610	0.00
62.	68.	Kammel,Rudolf		1613	M	SC Bavaria Regens	GER	1.0	1607	0.00

62.	69.	Kunte,Herbert		1603	M	SK Siemens Münche	GER	1.0	1607	0.00
64.	12.	Hein,Manfred		1943	M	FC Gunzenhausen 1	GER	1.0	1601	0.00
65.	71.	Scheuerlein,Gerha		1585	M	SK Schwabach 1907	GER	1.0	1594	0.00
66.	48.	Schönfelder,Heinr		1692	M	SC Tarrasch 45 Mü	GER	1.0	1554	0.50
67.	27.	Klein,Klaus		1809		SF Heidelberg	GER	1.0	1531	0.00
68.	32.	Kolkwitz,Klaus		1784	M	ESV 1949 Eberswal	GER	1.0	1491	0.75
69.	34.	Reimann,Günther		1768	M	SC Magstadt	GER	1.0	1461	1.00
70.	67.	Schuster,Herbert		1615	M	SK Landshut	GER	0.5	1947	0.75
71.	73.	Malik,Heinz		1568	M	SK Großweil	GER	0.5	1853	0.75
72.	79.	Siegl,Wolfgang,Dr		1522	M	SK 1926 Nördlinge	GER	0.5	1805	0.75
73.	83.	Otto,Klaus		1499	M	Thüringer Schachv	GER	0.5	1786	0.50
74.	64.	Oser,Thor		1622	M	SK 1929 Jöhlingen	GER	0.5	1775	0.25
75.	93.	Ewald,Frithjof		1355	M	SF Bad Reichenhal	GER	0.5	1735	0.75
76.	91.	Rudek,Gerald		1394	M	SC Feuchtwangen 1	GER	0.5	1679	0.25
77.	15.	Glueck,Josef		1899	M	SG Traunstein/Tra	GER	0.5	1669	0.25
77.	62.	Alefs,Heinz		1627	M	SC Eichenau	GER	0.5	1669	0.25
79.	99.	Jurgan,Brigitte		1225	W	SF Bad Reichenhal	GER	0.5	1640	0.25
80.	70.	Weyand,Fernand		1587	M	SVG Saarbrücken 1	FRA	0.5	1551	0.25
81.	51.	Harke,Horst		1686	M	SK Varel	GER	0.0	2152	0.00
82.	74.	Flockerzi,Armin		1565	M	VfR-SC Koblenz	GER	0.0	1881	0.00
83.	50.	Hermann,Josef		1687	M	TSV Trostberg	GER	0.0	1862	0.00
84.	52.	Niedermaier,Peter		1684	M	SU Ebersberg-Graf	GER	0.0	1811	0.00
85.	78.	Moderegger,Ludwig		1528	M	SF Bad Reichenhal	GER	0.0	1806	0.00
86.	56.	Klimpel,Siegfried		1662	M	TSV Kareth-Lapper	GER	0.0	1747	0.00
87.	80.	Steffl,Herbert		1512	M	ASV J'Adoube Gras	GER	0.0	1734	0.00
88.	84.	Kunert,Helmut		1491	M	SF Bad Reichenhal	GER	0.0	1722	0.00
89.	87.	Jehn,Detlef		1449	M	SF Bad Reichenhal	GER	0.0	1708	0.00
90.	88.	Nieswandt,Joseph		1443	M	SC Wangen	GER	0.0	1707	0.00
91.	90.	Wilfert,Eva-Maria		1414	W	PTSV SK Hof 1892	GER	0.0	1690	0.00
92.	92.	Borkenhagen,Bernd		1391	M	SK Rinteln	GER	0.0	1678	0.00
93.	95.	Neiss,Albrecht		1342	*	SC Kirchseon e.V	GER	0.0	1664	0.00
94.	97.	Bräu,Emmi		1331	W	SK Marktoberdorf	GER	0.0	1657	0.00
95.	96.	Steckel,Werner		1338	M	SG Siemens Amberg	GER	0.0	1655	0.00
96.	98.	Malik,Rosemarie		1327	W	SK Großweil	GER	0.0	1641	0.00
97.	65.	Husser,Oskar		1620	M	SC Caissa Falkens	GER	0.0	1620	0.00
98.	81.	Rosmann,Armin		1505	M	SG Büchenbach/Rot	GER	0.0	1590	0.00
99.	23.	Maugg,Ludwig		1848	*	SC Sonthofen	GER	0.0	1579	0.00
100.	82.	Baier,Peter		1500	*	FC Viktoria Alpen	GER	0.0	1505	0.00

Schachrätsel Nr.2:



Weiß am Zuge setzt matt!

Lösung:

- | | | | | | |
|----------------|----------|-------------|----------------|----------|--------------|
| 1. Th8+ | - | Sh8: | 2. Lh7+ | - | Kh7: |
| 3. Th1+ | - | Kg6 | 4. Sf4+ | - | Kg5 |
| 5. Th5# | | | (#) | | Matt! |
-